

# Waste management in action

From waste to worth: The systems that turn rubbish into resources

## Collection and Drop-off



### Drop-off points

Convenient locations for communities to deposit recyclables or hazardous waste.



### Collection systems

Trucks, bins and other equipment for collecting waste from homes, businesses and public spaces.



### Buy-back centres

Facilities where individuals or waste pickers sell recyclables for money.

## Sorting and Processing



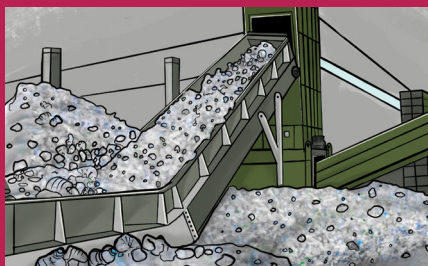
### Transfer stations

Facilities where waste is temporarily stored for transport to treatment or disposal sites.



### Material Recovery Facilities (MRFs)

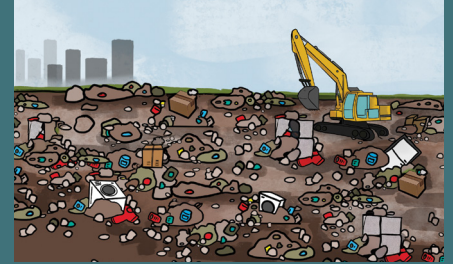
Facilities where mixed recyclables are sorted and processed.



### Recycling plants

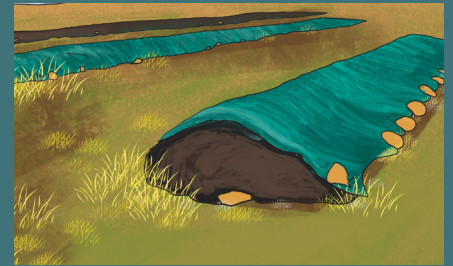
Centres where recyclables are sorted, processed and prepared.

## Management and Education



### Landfills

Big holes in the ground to dispose of and store waste safely.



### Composting sites

Facilities for organic waste to decompose and turn into nutrient-rich soil.



### Education and awareness

Campaigns to create awareness and teach the public about reducing, reusing and recycling.

Every step in waste management makes a difference.

**Reduce, reuse and recycle.**

Let's protect our environment for future generations.